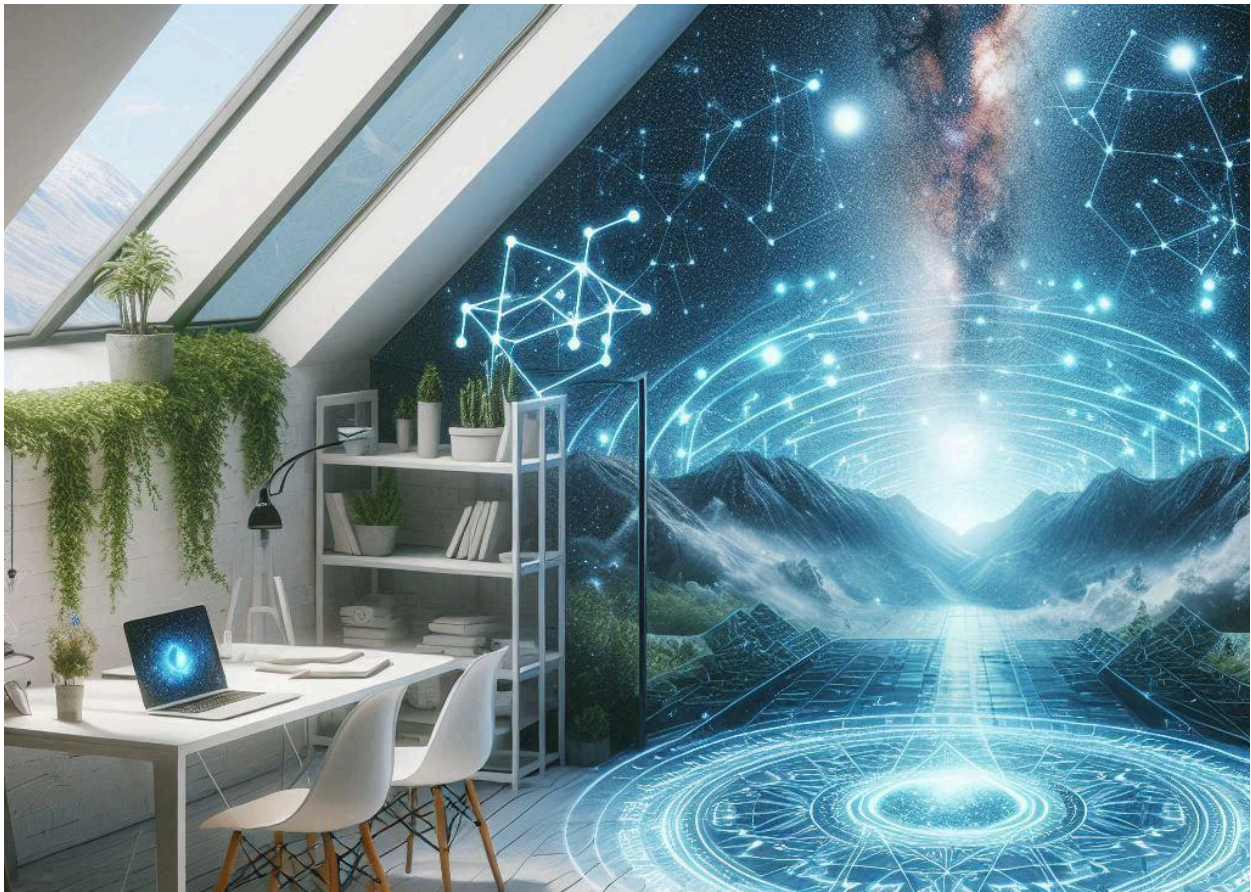


THE HAL ACADEMY BY RANDI GREEN

Energy Construction Work Module 2

Module 2: Co-Creation on the Subsidiary Timeline



In module 2, we investigate the inner-outer energy work required to construct and implement ideas aligned with the subsidiary future timeline. This module focuses on the energetic demands of taking ideas and concepts and turning them into co-creations.

We look into the work within subsidiary timeline code sequences and the holographic teaching system code network. Access to these are needed for any potential creational project that begins with generating the patterns of change—as well as the foundational

innovative holographic-energetic patterns—connecting our holographic-energetic growth potentials to a potential future evolutionary process. It focuses on the inner-outer energy work and holographic-energetic refinement required to bring ideas aligned with the subsidiary future timeline into some kind of realistic co-creation either in this reality or beyond. Co-creation is not just about materializing abstract concepts; it is a transformative process that demands alignment with progressive energy networks and the original reality field patterns that uphold the future evolutionary potentials.

To generate ideas and new projects within the future subsidiary timeline is to engage in a co-creative process that advances our personal growth. Thus, we must understand the intricate relationship between inner transformation, the energetic demands of co-creation, and the subsidiary timeline shaping what is possible and what is not.

Key Themes in This Module:

- The New Framework for Co-Creation - Overview

The subsidiary future timeline is not a distant abstraction—it is an active framework of energetic patterns and principles that can be accessed and utilized. Understanding this timeline requires awareness of how our personal ideas, abilities, and energetic composition intersect with collective evolutionary forces within the subsidiary timeline. We must learn to recognise and navigate these connections to ensure our work aligns with the unfolding higher potential of any future advanced civilization.

- From Concept to Reality: The Energetic Transition

Turning abstract concepts into tangible realities demands more than creativity; it requires precision in working with energy. We must learn the energetic processes that facilitate this transition, focusing on how to attune our higher order energy system to resonate with progressive networks within the subsidiary timeline, fuelling its complex information systems. This alignment allows for the seamless integration of our work into the holographic-energetic fabric of reality.

- The Role of Inner Work in Energetic Co-Creation

True co-creation begins within. This module will investigate (as much as it is possible) of the inner transformations necessary to access and sustain alignment with the subsidiary timeline. We explore how practices such as daily energetic clearing, energetic coherence

and energetic clarity are critical to overcoming resistance and amplifying our ability to implement visionary ideas.

- Creational Reality Field Patterns

The creational reality field patterns provide the scaffolding for construction work. These patterns act as gateways, bridging our ideas with the energy dynamics of the potential future. By understanding how these energetic patterns operate, we can position our work to resonate harmoniously within the larger evolutionary trajectory.

Table of Content

| | |
|--|-----------|
| The New Framework for Co-Creation - Overview | 5 |
| Accessing and Aligning with the Subsidiary Timeline - Basic Understandings | 5 |
| 1. The Subsidiary Timeline as a Living Framework | 5 |
| 2. Recognizing and Navigating Connections | 6 |
| From Concept to Reality: The Energetic Construction Work | 8 |
| The Role of Precision in Energetic Work | 8 |
| Connecting with the Safe Zone's Holographic Teaching System Codes (HTSC) | 10 |
| Core Aspects of HTSC and its Network | 11 |
| Aligning with the Holographic-Energetic Fabric | 14 |
| The Role of Inner Work in Energetic Co-Creation | 18 |
| Exercise: Three Pillars of Inner Transformation | 18 |
| Exercise: Overcoming Resistance | 19 |
| Amplifying Your Co-Creation Potential | 20 |
| Practical Exercise: Inner Alignment Visualization | 20 |
| The Original Reality Field Patterns | 21 |
| Why Are These Patterns Important? | 22 |
| How to Work with Original Reality Field Patterns | 22 |
| Practical Steps for Bridging Ideas with Energetic Patterns | 23 |
| Case Study: A Vision Aligned with Original Patterns | 24 |
| Turning Abstract Concepts into Tangible Realities | 25 |
| Practical Techniques for Precision in Energy Work | 26 |
| Practical Tools for Inner Alignment | 27 |

The New Framework for Co-Creation - Overview

The subsidiary timeline is an active framework of energetic possible reality patterns and principles that can be accessed and utilized. Understanding this timeline requires awareness of how our personal ideas, abilities, and energetic composition intersect with collective evolutionary forces.

Core Questions:

- What inner transformations are required to align with the subsidiary future timeline?
- How can we connect our inner growth to this evolutionary process?
- What are the energetic principles involved in turning visionary ideas into reality?
- How do the original reality field patterns support the co-creations of higher order concepts?

Accessing and Aligning with the Subsidiary Timeline - Basic Understandings

The first level to grasp is that the subsidiary timeline is not a distant concept but a living framework of energetic reality patterns and principles, expressed as complex information systems. By understanding and connecting with this framework, we can align our work with the unfolding higher potential of humanity.

1. The Subsidiary Timeline as a Living Framework

The subsidiary timeline is an energetic structure actively shaping the everyday awareness of those of us who are on it.

- It operates as a blueprint, containing dynamic creational reality patterns following the original solar system principles, expressed as complex information systems designed to guide both individual and collective progress.
- This timeline is accessible to those who have the correct consciousness potentials and thus can align their energy systems to resonate with it.

Think of it as a highway: while many may remain on the main timeline, the subsidiary timeline is the alternate route, offering access to the ideas and concepts that fuels higher order civilizations and with that, more expansive evolutionary possibilities.

Our higher order energy system will then not be separate from the subsidiary timeline—it will become interconnected.

- The ideas we generate, the actions we take, and the intentions we hold send ripples into the collective networks of the subsidiary timeline.
- Likewise, the patterns and principles of the subsidiary timeline influence our personal abilities, offering pathways to growth and innovation if we know how to tap into them.

2. Recognizing and Navigating Connections

To work with the subsidiary timeline, we must first recognize the points of connection between our higher order energy system and the subsidiary timeline code sequences on the stage that is suitable for us. We all begin with stage 1 as explained in module 1. However, here are some further good aspects to contemplate upon.

- **Self-Awareness:** Reflect on your core abilities and visions. These act as your access points to the subsidiary timeline.
- **Environmental Cues:** Pay attention to synchronicities, inspirations, and intuitive insights—they are reciprocity symbols and signals from the subsidiary timeline.
- **Energetic Alignment:** Ensure your energy system is living up to the progressive standards and focused into the higher order levels of your holographic-energetic architecture, so you can align with the subsidiary timeline's code sequences.

Practical Techniques for Daily Alignment with the Subsidiary Timeline

1. **Meditative Connection:**
 - Contemplate upon and work with the subsidiary timeline as a luminous network of code sequences beyond space and time as part of the original holographic-energetic fabric of reality within the 4th to 6th dimension.

-
- You need to have built the connection into your higher order energy field to be able to sync with this network, and to be able to allow its patterns to inform and inspire your work.

2. Energetic Calibration is a Must:

- Daily scan your energy system to identify misalignments and interception.
- Use the trained clearing practices from the progression sciences to release blockages that may hinder your ability to connect with the subsidiary timeline.

3. Harmonic Coherence is Key:

- Cultivate states of coherence—such as appreciation, focus, and intention—that naturally align with the higher principles of the timeline.

3. Aligning Our Work with the Future Human Potential

The goal is to ensure our efforts contribute to the future potential of our higher order abilities and how they can unfold now, to align with the potential link up to future civilizations..

- Ask yourself: *“Does my work align with the highest good for myself and the ones on the subsidiary timeline and potentially expand into a potential future civilization?”*
- Focus on ideas and projects that elevate not only your life but also the potential of others.

Our contributions, no matter how small, have the power to amplify the individual, the collective trajectory—whatever that might be—when aligned with the subsidiary timeline. The subsidiary future timeline is thus an invitation to step into a co-creative role in shaping the potential outcome of the subsidiary timeline.

- By aligning your personal energies with this framework, you not only advance your goals but also contribute to the collective of higher human potentials.
- Remember, this is not just about accessing energies—it’s about actively working with them to co-create a brighter, more progressive future.

From Concept to Reality: The Energetic Construction Work

Turning abstract concepts into tangible realities demands more than creativity; it requires precision in construction working with energy. The holographic-energetic processes that facilitate this transition, focusing on how to attune our personal energy to resonate with the HTSC network. This alignment allows for the integration of our work into the holographic-energetic fabric of reality. In this, we are working with Principle 3 and 4.

So, what does this energetic precision require to transform abstract concepts into tangible, actionable outcomes? Creativity is essential, but to make ideas real, we must skillfully navigate the energetic processes that bridge thought and co-creation.

Co-creation begins as an idea—a spark in our higher order awareness.

- This spark exists initially as an energetic vibration, and it must be refined and grounded into the physical realm. This happens via the creational patterns, we build in inner work, contemplation, working with the ideas, discover the details and all the needed levels for this piece of project to become a co-created reality.
- The transition from abstract concept to reality requires harmonizing our energy with the progressive networks shaping the holographic-energetic fabric of our world.

The Role of Precision in Energetic Work

Creativity provides the vision, but precision provides the structure.

- **Energetic Calibration:** Ensuring that our higher order energy system resonates with the desired outcome. Misalignments can distort or delay co-creation.
- **Focused Intentions:** A clear and unwavering intention directs the energy flow, acting as a guiding framework for our ideas.
- **Connection to the HTSC Network:** The HTSC network functions as the pathway within the holographic-energetic field that enables ideas to move efficiently from inspiration to reality. If the ideas are cleared by the HTSC. If not, what we build will collapse and be removed from the subsidiary timeline.

Creativity as Vision

Creativity is the generative force behind new ideas, innovations, and the ability to perceive possibilities beyond current constraints. In energetic work, creativity allows us to explore higher order frameworks, uncover new patterns, and envision connections that extend beyond the tangible. Creativity is like drawing a sketch—it provides the outline of potentiality.

However, creativity alone is expansive and unbounded, which means it can sometimes lack focus or clarity. Without structure, creative energy can dissipate, leaving visions unfulfilled or misaligned.

Precision as Structure

Precision, on the other hand, is the mechanism that grounds creativity into a coherent form. It is the disciplined application of energy, attention, and intention to refine, anchor, and articulate the vision so it can co-create effectively. Precision ensures that every aspect of the work aligns with the intended outcome, leaving no room for distortions or leaks of energy.

In energetic work, precision is about:

1. **Clear Intention:** Setting a definitive purpose for the work, ensuring that the energetic vibration matches the desired outcome.
2. **Energetic Calibration:** Maintaining coherence with specific vibratory states, ensuring the energy field aligns perfectly with the intended result.
3. **Methodical Execution:** Breaking down the creative vision into structured steps or phases, each executed with awareness and deliberate focus.

Why Both Are Essential

In energetic co-creation work, the balance of creativity and precision mirrors the dual forces of chaos and order:

- **Creativity fuels expansion:** It brings inspiration, innovation, and the capacity to see beyond the mundane.
- **Precision grounds potential:** It transforms expansive ideas into actionable and measurable outcomes, ensuring alignment with the larger framework or system.

For example, when bridging higher order holographic-energetic patterns into current scientific paradigms, creativity allows for the download of innovative concepts. However, precision ensures these concepts are framed in language, methodology, and structure that traditional sciences can understand and utilize effectively.

Synergy in Practice

1. **Creative Stage:** Generate visions, explore possibilities, and connect to higher order energies.
2. **Precise Refinement:** Translate visions into actionable steps or structured frameworks. Use tools like diagrams, algorithms, or linguistic clarity to solidify the abstract into form.
3. **Feedback Loop:** Allow the creative vision to inform precision, and let precision refine and focus creativity. This iterative process ensures growth and evolution while maintaining integrity.

In essence, creativity and precision are two sides of the same coin. Together, they ensure that the boundless potential of energetic work is not only envisioned but also actualized in its highest form

Connecting with the Safe Zone's Holographic Teaching System Codes (HTSC)

The HTSC is a network operated via holographic-energetic code sequences that support growth, innovation, and the realization of higher order potentials on the subsidiary timeline.

- It consists of dynamic, evolving patterns within the holographic-energetic code sequences that allow for co-creation into the fabric of reality that carry the energy of collective evolution on the subsidiary timeline.
- Aligning with the HTSC and its network ensures our work is supported by the larger energetic flow, amplifying its chances of success.
- If the idea or project is not in alignment with the HTSC the creational pattern (as you learned in the HAL Changemaker Material) will collapse on its own.

The HTSC and its network functions as a multidimensional system designed to foster growth, innovation, and the realization of higher order potentials for those aligned with the subsidiary timeline. This network operates through highly intricate holographic-energetic code sequences, which are dynamic patterns of information encoded within the higher-dimensional framework of reality.

Core Aspects of HTSC and its Network

1. Holographic-Energetic Design:

The HTSC and its network is holographic-energetic in nature, meaning that each part of the system contains the information of the whole. This allows for seamless interconnectivity across multiple levels of existence—physical, energetic, and higher-dimensional.

2. Those who tap into the HTSC and its network can access its full potential regardless of their position within it, provided their alignment and vibratory state match its codes.

3. Energetic Code Sequences:

These sequences are not static; they are living patterns of energy and information that adapt to the needs and intentions of the timeline. These codes:

- Facilitate **growth** by unlocking latent capacities within individuals and collectives, allowing them to progress in awareness and capability.
- Drive **innovation** by introducing new patterns of thought, energy structures, and solutions that align with the evolutionary goals of the subsidiary timeline.
- Support the **realization of higher order potentials** by integrating advanced energetic and informational constructs into the human and planetary fields.

4. Subsidiary Timeline Alignment:

The subsidiary timeline represents a path of renewal and alignment with a more advanced state of existence. The HTSC and its network acts as a stabilizer and accelerator for those walking this path, enabling them to:

- Maintain coherence amidst the distortions of the dominant timeline.

-
- Access the resources and support necessary to fulfill our roles as stabilizing anchors or pioneers of higher order frameworks.

Key Functionalities of the HTSC and its Network

1. Energetic Calibration and Support:

The network adjusts its code sequences to meet the energetic needs of those aligned with it by showing us what to do. This includes clearing distortions, balancing fields, and infusing individuals with the specific frequencies required for our growth and mission. Naturally, if we ask and listen in contemplation.

2. Information Transmission:

The HTSC network functions as a reservoir and transmitter of higher order scientific solutions to certain issues. It communicates via holographic-energetic signals that can be interpreted through higher order psychic-energetic attunement, or advanced technological interfaces developed for this purpose.

3. Collective Coherence Building:

It helps create a shared field of resonance among those aligned with the subsidiary timeline, enabling collaborative innovation and the co-creation of shared higher order goals.

4. Activation of Latent Potentials:

By interacting with the HTSC and its network, we receive energetic codes that activate dormant aspects of our energetic, psychic, and even possible future genetic potentials. This activation aligns us more deeply with the subsidiary timeline and its higher order aims.

Implications for Growth and Innovation

- **Growth:** We will be guided through challenges that refine our energetic structures and align us more fully with our higher order capacities.

-
- **Innovation:** The network introduces entirely new paradigms of thought, enabling the integration of higher-dimensional sciences, technologies, and ways of being into the physical domain.
 - **Realization of Higher Order Potentials:** Through sustained interaction with the HTSC and its network, we are offered the possibility of transcending limitations imposed by the main timeline, anchoring possibilities that serve as prototypes for future cycles of reality.

The Role of Conscious Interaction

To fully engage with the HTSC and its network, we must embody:

1. **Energetic Alignment:** A vibratory state resonant with higher order principles.
2. **Clear Intention:** A focus on supporting the subsidiary timeline's goals.
3. **Conscious Awareness:** The ability to interpret and integrate holographic-energetic transmissions into actionable insights or innovations.

The HTSC and its network is a tool and a pathway for those who seek to uphold and expand the potentials of the subsidiary timeline, ensuring that our work remains coherent, aligned, and impactful within the multidimensional reality field.

Techniques for Resonance and Alignment

1. **Energetic Synchronization**
 - Begin by assessing your current energy state. Are there blockages or distortions that need clearing?
 - Use meditation or focused contemplation to align your personal codes within your holographic-energetic system with the HTSC network.
 - This is only possible if you have built the needed subsidiary timeline architecture into your higher order levels of your energy system.

-
- Work with the concept as a creational pattern. Imagine it anchored into the holographic fabric, drawing energy and resources from the HTSC network to grow.
 - Focus on details—shape, idea, pattern, purpose and function—until the idea feels tangible in your mind’s eye.
 - Monitor how your higher order energy system interacts with the network. Adjust your intention or approach as needed to maintain alignment.
 - Pay attention to synchronicities or obstacles—they often indicate whether you’re in resonance or need to recalibrate.

Exercise: Deepen Your Connection to the HTSC and its Network:

1. Close your eyes and take a few deep breaths. Visualize a radiant web of light that represents the holographic teaching systems and its complex information codes.
2. Picture your energy field as a unique strand within this web, vibrating with potential.
3. Set an intention to align your personal energy with the principles of growth, harmony, and innovation embedded in the network.
4. Be very aware of deception, interception and manipulation in this exercise.
5. Reflect on one idea or project you are working on. Imagine it infused with the holographic teaching system codes, evolving into its highest possible expression.

Aligning with the Holographic-Energetic Fabric

The holographic-energetic fabric is the foundational structure of our reality—also on the subsidiary timeline. It connects all things through layers of energy and information. When we align our work with this fabric, it becomes part of a larger interconnected system, increasing its impact and sustainability. Try to:

- **Energetic Mapping:** Identify how your work fits into the larger network.
- **Coherence Building:** Ensure your idea is aligned with universal principles like harmony, balance, and progress.

Exercise: Co-Creating with Precision

Step 1: Clarify Your Idea

- Write down or visualize your concept in detail. Define its purpose and potential impact.

Step 2: Connect to the Network

- Close your eyes and visualize the progressive network as a web of light and energy.
- Imagine your idea as a glowing orb, sending out threads of energy that weave into the network.

Step 3: Energize the Idea

- Breathe deeply and focus on infusing the orb with energy, intention, and detail.
- Feel the network responding, amplifying and integrating the idea into its fabric.

Step 4: Release and Trust

- Once the idea feels fully integrated, release it into the network with trust that it will manifest in the right time and way.

Important to Remember

Turning abstract concepts into tangible realities is an art and a science.

- It requires a balance of creativity, precision, and alignment with the progressive networks that shape our reality.
- By honing these skills, we will not only co-create our personal goals but also contribute to the progression of the collective holographic-energetic fabric.

Remember, the key is not just to dream but to align, act, and integrate.

Transforming abstract ideas into actionable, tangible outcomes is a dynamic process that draws upon both artistic creativity and scientific methodology. This interplay involves envisioning the possibilities, structuring their co-creation, and ensuring alignment with the progressive networks—energetic and informational systems—that underlie and shape our shared reality.

1. The Art of Creation

- **Visioning:** The creative process begins with the imagination, where abstract concepts are seeded. This phase taps into higher order awareness, drawing inspiration from multidimensional fields or intuitive insights.
- **Fluid Exploration:** Creativity involves fluidity and openness to possibilities, allowing ideas to evolve naturally without constraint in the initial stages.
- **Energetic Resonance:** Ideas that resonate deeply on an energetic level often have the potential to align with higher order frameworks and the collective fabric.

2. The Higher Order Science of Co-Creation

- **Precision:** Higher Order Science comes into play as these concepts are refined, structured, and anchored into practical methodologies. This involves disciplined thinking, detailed planning, and clear execution.
- **Alignment:** Ensuring that the idea is harmonized with the energetic currents of reality—both personal and collective—is essential. Misaligned efforts, no matter how creative or structured, often fail to materialize effectively.
- **Integration:** Successfully turning an idea into a tangible reality requires it to be integrated into existing systems or paradigms, ensuring sustainability and functionality.

3. Balance of Key Elements

- **Creativity** provides the expansive force to envision and innovate.
- **Precision** grounds and structures the vision into actionable steps.

-
- **Alignment** ensures coherence with the progressive networks that facilitate co-creation in harmony with the larger holographic-energetic framework.

4. The Role of Progressive Networks

The HTSC and its network provides the infrastructure that supports co-creation processes. By attuning to the code sequences and their information, we can access the resources and energetic blueprints needed to bridge the gap between vision and reality. Working with these code sequences:

- Amplifies the potential of personal efforts.
- Ensures contributions are in sync with the collective evolutionary trajectory.
- Minimizes distortions or resistance during the co-creation process.

5. Contributing to the Collective Holographic-Energetic Fabric

Every tangible realization, when aligned with higher order principles, strengthens and evolves the collective fabric of the higher order reality. Each act of co-creation:

- Sends ripples through the energetic networks behind the subsidiary timeline, influencing the patterns accessible to others.
- Expands the repository of possibilities for those of us on the subsidiary timeline. Reinforces the subsidiary timeline for those working within it.

The Core Process: Align, Act, Integrate

- **Align:** Establish coherence with your vision, inner energy, and the HTSC networks.
- **Act:** Take deliberate steps, infused with focus and precision, to ground your idea into reality.
- **Integrate:** Ensure the tangible result is harmonized with both personal goals and the collective system, allowing it to sustain and propagate.

Dreaming is the seed, but action and alignment are the catalysts for growth. By mastering this art-science balance, we transcend the role of mere dreamers to become co-creators of reality, leaving a lasting imprint on the collective holographic-energetic framework.

The Role of Inner Work in Energetic Co-Creation

True co-creation begins within. And that means the inner transformations are necessary to access and sustain alignment with the higher order progressive timeline. This includes practices such as energetic clearing, energetic coherence and energetic clarity are critical to overcoming resistance and amplifying our ability to implement visionary ideas.

True co-creation begins within. It is not merely about external action but about cultivating the internal clarity and alignment needed to bring visionary ideas into reality. In this module, we will focus on the essential inner transformations that allow you to connect to and sustain alignment with the higher order progressive timeline.

Co-creation is more than setting intentions—it requires an energetic readiness to hold and sustain the energies necessary for change.

- The higher order progressive subsidiary timeline operates at advanced vibrational levels, reflecting our highest potential.
- To align with this timeline, our internal state must resonate with its energetic principles of growth, harmony, and evolution.

Exercise: Three Pillars of Inner Transformation

1. Energetic Clearing

- Clearing removes the dense or stagnant energies that block alignment.
- **Why is it important?** Energetic debris—whether from past experiences, environmental influences, or unresolved emotions—creates resistance, preventing alignment with higher frequencies.

2. Energetic Coherence

- Coherence is about creating harmony within your energy system. It ensures all aspects of your being—mental, emotional, and spiritual—are working together.

-
- **Why is it important?** Misalignment within your energy system weakens your ability to co-create. Coherence strengthens your connection to the progressive timeline.
 - **How to Build Coherence:**
 - Practice heart-centered meditations to harmonize emotions.
 - Align your actions with your core values to reduce inner conflict.
 - Use energy mapping to identify areas where your intentions and actions may be out of sync.

3. Energetic Clarity

- Clarity allows you to focus your energy with precision. It ensures your intentions are strong, focused, and free from ambiguity.
- **Why is it important?** A scattered or unclear intention diffuses your energy, weakening its impact on the progressive timeline.
- **How to Cultivate Clarity:**
 - Use journaling or verbal affirmations to refine your intentions.
 - Regularly revisit your goals to ensure they align with your highest purpose.
 - Meditate on your vision, focusing on its details and the feeling of its realization.

Exercise: Overcoming Resistance

Resistance is a natural part of the process.

- **What causes resistance?**
 - Unresolved fears or limiting beliefs.
 - Energetic mismatches with the subsidiary timeline.
 - External influences pull you away from your inner alignment.
 - Acknowledge resistance as an opportunity for growth.
 - Use energy clearing practices to release it.
 - Strengthen your connection to your inner purpose through daily training and contemplation.

Amplifying Your Co-Creation Potential

Once you have cleared, harmonized, and clarified your energy, you can amplify your ability to co-create:

- **Integrate Practices:** Make energetic clearing, coherence-building, and clarity exercises part of your daily routine.
- **Connect to the Subsidiary Timeline:** Visualize yourself weaving into the higher order energy network that belongs to your energy system, feeling the supportive flow.
- **Act with Intention:** Every action must resonate with the vision you aim to co-create.

Practical Exercise: Inner Alignment Visualization

1. Ground and Center Yourself

- Sit in a quiet place and focus on your breath.
- Feel your heart field, and breathe to ground your energy.

2. Clear Your Energy Field

- Visualize a stream of golden light pouring down from above, washing away all dense or stagnant energy.

3. Create Coherence

- Place your hands over your heart and breathe deeply.
- Focus on a feeling of appreciation to harmonize your emotions.

4. Set Your Intention

- Visualize your vision as a glowing sphere of light in front of you.
- Feel the energy of the subsidiary timeline connecting to this sphere, amplifying its potential.

5. Release and Trust

- Let go of the need to control the outcome, trusting that the alignment you've created will guide your co-creation process.

Remember

True co-creation is not just about doing—it's about being. The more aligned you are internally, the greater your capacity to bring visionary ideas into existence. Remember, the future isn't something you wait for; it's something you actively create through your inner transformations and outer actions.

- By committing to energetic clearing, coherence, and clarity, you create a foundation for aligning with the higher order progressive subsidiary timeline.
- This alignment allows you to not only manifest your personal goals but also contribute to the collective networks of the subsidiary timeline.

The Original Reality Field Patterns

The original reality field patterns provide the scaffolding for all progressive work. These patterns act as gateways, bridging our ideas with the energy dynamics of the higher order subsidiary timeline. By understanding how these energetic patterns operate, we can position our work to resonate harmoniously within the subsidiary timeline trajectory.

These patterns are the scaffolding upon which all progressive work is built. By understanding how these holographic-energetic patterns operate, we can position our ideas.

Let's dive into how these patterns act as gateways, bridging our creative concepts with the energy dynamics of the higher order advanced civilizations.

- **Definition:** Original reality field patterns are foundational energetic structures that underpin the progressive energies shaping our reality.
- **Role:** These patterns act as *gateways*, linking individual efforts with the larger frameworks of the higher order future timeline.
- **Significance:** They determine how ideas move from inspiration to co-creation by aligning with the evolutionary energy flows already present in the universe.

Why Are These Patterns Important?

1. Energetic Frameworks for Evolution:

- These patterns create a cohesive structure that guides the progression of humanity's future timeline.
- By aligning with them, we tap into a flow of energy that supports growth, innovation, and transformation.

2. Resonance and Harmony:

- Work that resonates with these patterns integrates seamlessly into the collective energy field, amplifying its impact.
- Misalignment with these patterns can lead to resistance, stagnation, or even the dissolution of our efforts.

3. Bridging Realms:

- Original reality field patterns act as bridges, connecting the abstract realm of ideas with the tangible realm of co-creation.
- They enable our work to become part of the larger holographic-energetic networks.

How to Work with Original Reality Field Patterns

1. Recognize the Patterns as Gateways:

- Think of these patterns as energetic doorways. Your ability to move through them depends on the alignment of your ideas and energy with their structure.

2. Understand the Dynamics of the Patterns:

- **Principles:** These patterns operate on universal laws of balance, harmony, and progression.
- **Rules:** There are energetic conditions that must be met to access their potential fully.

-
- **Energetic Laws:** Actions taken within these patterns must align with the highest good for both the individual and the collective.

3. Assess Your Position:

- Examine how your work fits within the larger framework of these patterns.
- Consider whether your ideas resonate with the values and directions supported by the higher order timeline.

4. Align Your Energies:

- Use meditation, visualization, or energetic attunement practices to harmonize your personal energy field with these patterns.
- Seek coherence between your intentions and the evolutionary forces guiding the original reality networks.

Practical Steps for Bridging Ideas with Energetic Patterns

1. Identify Your Core Vision:

- What is the essence of your idea or project?
- Does it align with principles of growth, innovation, and service to the collective good?

2. Map the Energetic Terrain:

- Use energy reading techniques to sense whether the original patterns support your idea.
- Pay attention to synchronicities, intuitive nudges, and energetic feedback from your environment.

3. Refine Your Work:

- Adjust your ideas to resonate more strongly with the patterns.

-
- Be willing to evolve your concept if resistance arises, as it may indicate misalignment.

4. Anchor Your Work:

- Once aligned, visualize your idea being integrated into the holographic matrix of the higher order timeline.
- Use intentional practices, such as grounding rituals or energy codings, to stabilize this connection.

Case Study: A Vision Aligned with Original Patterns

Imagine you have an idea for an innovation that addresses a global challenge, such as sustainable energy.

- **Step 1:** Begin by examining whether the idea resonates with principles of progression and collective benefit.
- **Step 2:** Assess whether it aligns with the foundational rules of balance and harmony within the natural world.
- **Step 3:** Use visualization to see your work as part of the larger evolutionary trajectory, connecting with the original reality field patterns.
- **Outcome:** When your idea aligns, you'll notice increased synchronicities, reduced resistance, and accelerated momentum in bringing it to life.

The original reality field patterns are dynamic frameworks designed to support progress.

- By working within these patterns, you position your work to thrive within the larger trajectory of humanity's future.
- Understanding and aligning with these gateways is not just a skill but a practice that deepens your ability to bring visionary ideas into tangible reality.

Turning Abstract Concepts into Tangible Realities

Here a recap of how these abstract concepts can be transformed into tangible realities. This process is at the heart of energetic construction work, and it requires more than creativity—it demands precision and alignment with progressive energy networks.

1. The Role of Energy in Co-Creation:

- Co-Creation is not merely physical; it's an energetic process that begins in higher-dimensional patterns for the highest good of the many.
- Abstract ideas exist as a holographic-energetic blueprint before transitioning into the physical realm.

2. Attunement to the Future Progressive HTSC and its Network:

- Aligning with the subsidiary timeline and its progressive code sequences, contained within the HTSC and its network ensures that your work resonates with the subsidiary timeline.
- These code sequences and the HTSC and its network serve as highways for ideas, connecting them to subsidiary timeline energy streams.
- If these are not aligned with the allocated possibilities of the subsidiary timeline, and cannot be adjusted by the HTSC and its network, then the pattern of change, and your project will fail and falter.

3. Seamless Integration into Reality:

- When your energy resonates with the subsidiary timeline networks, your ideas naturally integrate into the holographic-energetic fabric of the subsidiary timeline.
- This minimizes resistance and maximizes impact.

Practical Techniques for Precision in Energy Work

1. Energetic Calibration:

- Use meditative and contemplative practices to tune your energy field to match the vibrational patterns of your idea.
- Visualize the idea being energized within the supportive HTSC network.

2. Anchor Your Intentions:

- Write down or voice your concept while holding an awareness of its energetic impact on the subsidiary timeline code sequences.
- Use symbolic actions, like creating a physical representation of your idea, to anchor it into the physical realm.

3. Holographic Visualization:

- Envision your idea as already co-created, interacting with the energetic patterns of reality. Check if this benefits the collective or not.
- Practice seeing its ripple effect on humanity and the environment.

Turning ideas into realities requires you to act as both creator and conductor of energy. With precision and alignment, your work can transcend obstacles and become part of a larger evolutionary movement.

True Co-Creation Begins Within

True co-creation is an inner process. Before we can bring transformative ideas into the world, we must align our inner state with the energetic demands of the subsidiary timeline.

A. Energetic Clearing as a Foundation:

- Co-creation requires a clear and unblocked energy system.
- Negative influences, limiting beliefs, and unresolved emotional energies must be addressed.

B. The Role of Energetic Coherence:

- Coherence means that your thoughts, emotions, and intentions align harmoniously with your actions.
- It creates a stable energetic foundation for your ideas to grow and thrive.

C. Clarity and the Amplification of Visionary Ideas:

- Clear intentions resonate more strongly with progressive energy networks.
- Ambiguity in your goals or energy weakens the connection to the network.

Practical Tools for Inner Alignment

Clearing Practices:

- Daily grounding exercises to release stagnant energy.
- Daily practices for cleansing your space and energy field.

Clarity Building:

- Journaling your intentions and refining them until they feel aligned with your highest vision.
- Using creational patterns reinforce your alignment with the subsidiary timeline.

Energetic Integration Techniques:

- Practice embodying the feeling of success and alignment as if your idea is already realized.
- Engage in meditative journeys to connect with the original reality field patterns, visualizing your role within them.
- Inner alignment is about more than personal success—it connects you to the networks of the subsidiary timeline. Every shift in your energy contributes to the unfolding of the subsidiary future timeline, amplifying, or degrading, the collective potential.

About the HAL Academy By Randi Green:

Over the years, from 2007 until 2016, I went into explorative and psychic-energetic processes without any forms of mind-altering substances, to find new techniques to amplify my higher order psychic-energetic abilities. I did so in self-reconstructive energy work, altered state meditation and deep contemplation processes reconstructed from the memories I had of these, and adding this to my studies of the different techniques described and handed over in the ancient teaching systems.

I wanted to prove that humans can alter what they are, to the core of their essence, in diverse forms of inner-outer psychic-energetic processes. That we do not need to add any chemical substances, or mind-altering remedies, to be able to activate, integrate and perform the higher order processes of the expanded human awareness.

The higher order holographic realities and their holographic multilayered energy units operate in dissimilar ways than our everyday reality physics and therefore the learning process to master these inner higher order levels of our capacities hold many inner and outer challenges. These developmental challenges are both of a physical nature as well as a psychological one.

As a professional psychotherapist ([existential psychotherapy](#)) and personal life coach since 2010, I have talked to many people from all over the world and, from these conversations, gained deep insights into what it means to be human on this planet.

Furthermore, I have a Bachelor degree in Theology (University of Copenhagen) although I am not religious, yet I felt the need to study the Bible from a scientific point of view, and the how-to read this ancient text in its original Hebrew, ancient Greek and Latin.

I am examined at Copenhagen Business School in Organization, Management and Human Resources and began my work life within that field. Over time I have taken additional courses and certificates within small business accounting, small business economics, marketing, strategies for growth, computer sciences and psycho-religious studies. I am a licensed healer too.

From my work with clients, personal experiences and otherworldly encounters I have developed the concepts of the Higher Awareness Lifestyle (HAL).

The HAL Academy Online Courses are teaching the higher order sciences to assist and progress humanity.

Visit the HAL Academy by Randi Green on <https://toveje.dk/>

Or the Higher Order Psychic-Energetic Institute by Randi Green on <https://randigreen.one/>